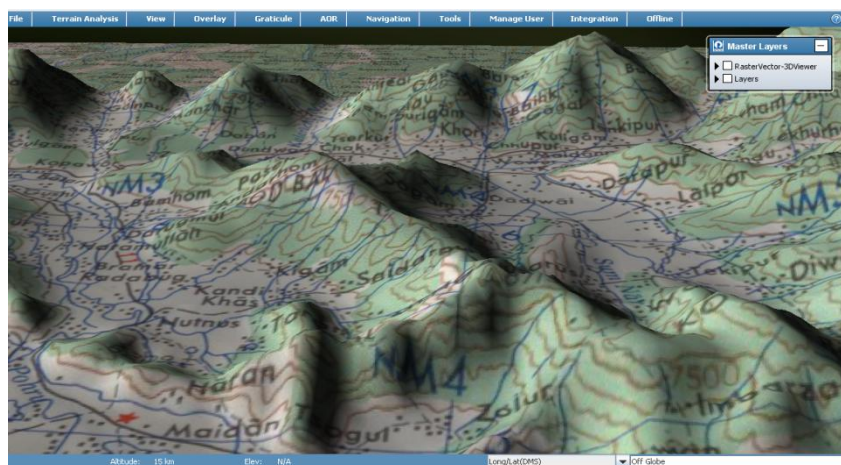
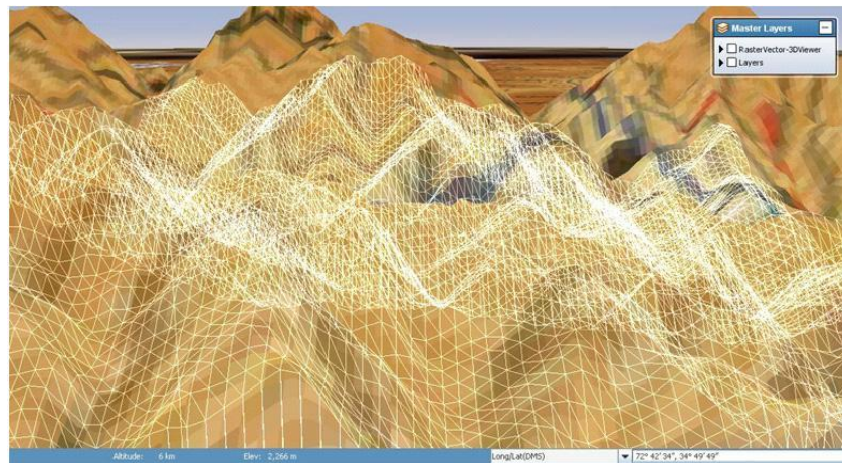


# Rolta Enterprise GIS Portal

Rolta Enterprise GIS Portal is an advanced Web based application for terrain visualization and analysis with in a secured intranet environment. This application enables variety of analytical operations over terrain data and derives meaningful geographic outputs which help in further decision making in various real life applications. It is equipped with various visualization, navigation and analysis services to generate quality outputs for obtaining tactical information. Dedicated visualization capabilities at local, regional, and global scales, are provided through 2D and 3D map viewers that facilitate smarter and realistic visualization of geographical information.

It allows running powerful queries on both spatial and attributes information, produces intelligent overlays of vectors with corresponding attribute information, finally quick and efficient transfer of all these geo-referenced information along with raster maps, raster elevation data, raster imagery through OGC Web Services (WMS, WFS, WFS (T) and WCS) enabling faster on-site action and implementation.



# Rolta Enterprise G I S Portal

## Key Features

Powerful Terrain Analysis	<ul style="list-style-type: none"> <li>Near-realistic Terrain Visualization - sun-light and moon-light shading.</li> <li>Various functions for terrain based analysis like Line of Sight, Suitability analysis, Volume Analysis</li> <li>Ability to derive various terrain parameters like Contours, Slope, Shaded Relief</li> <li>Ability to represent terrain data and other attribute information over terrain in 3D through different functionalities like color coded elevation, Thematic Map etc.</li> </ul>
Strategic 2D and 3D Terrain Visualization	<ul style="list-style-type: none"> <li>Ability to view terrain from various elevation positions, angles and azimuths.</li> <li>Ability to switch between 2D and 3D views</li> <li>Perfectly orthogonal View (2D) of surface features is also supported</li> <li>Support for both flat world and 3 dimensional round world view</li> </ul>
Efficient Navigation Through Terrain	<ul style="list-style-type: none"> <li>Smooth navigation around the globe and to the AOI (Area of Interest) is ensured with a bunch of navigation options available like</li> </ul>
	<ul style="list-style-type: none"> <li>○ Lat/Long</li> <li>○ Place Names</li> </ul>
	<ul style="list-style-type: none"> <li>○ Map Sheet</li> <li>○ Landmarks</li> </ul>
	<ul style="list-style-type: none"> <li>○ AOI</li> <li>○ MGRS</li> </ul>
	<ul style="list-style-type: none"> <li>○ Map Board</li> <li>○ IMGRS</li> </ul>
Accurate Geopositioning Through Graticules	<ul style="list-style-type: none"> <li>Any location on globe may be visualized in user defined coordinate systems like through Graticule menu like</li> </ul>
	<ul style="list-style-type: none"> <li>○ Lat/Long</li> <li>○ M G R S</li> </ul>
	<ul style="list-style-type: none"> <li>○ U T M</li> <li>○ I M G R S</li> </ul>
Logical Spatial and Attribute Query	<ul style="list-style-type: none"> <li>Ability to query both on spatial and attribute data on published vectors on the globe</li> </ul>
Intelligent Overlays	<ul style="list-style-type: none"> <li>Ability to create intelligent overlays may be created with superimposed vector over the raster layer over the globe</li> </ul>
Cartographic map composition	<ul style="list-style-type: none"> <li>Ability to compose cartographic quality maps depicting results of the analysis.</li> </ul>
Smart transfer and visualization of geographic information through secured web services among hierarchical users	<ul style="list-style-type: none"> <li>Hierarchical chain of users can be created with predefined right for the purpose of visualization and data publishing</li> <li>Intelligent and meaningful analytical outputs may be shared among them for the same purpose and necessary actions</li> </ul>
Ingenious Offline Map Client tool	<ul style="list-style-type: none"> <li>Very useful offline Map Client tool is available to perform limited set of activities like editing the downloaded overlays in an offline mode.</li> <li>Offers provision to synchronize the offline editing done on overlays once reconnected to the network</li> </ul>

